



## LOW RISE - THE INDIGO COLLECTION

THREE BEDROOM  
TWO BATH

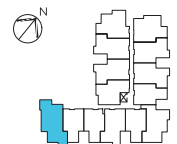
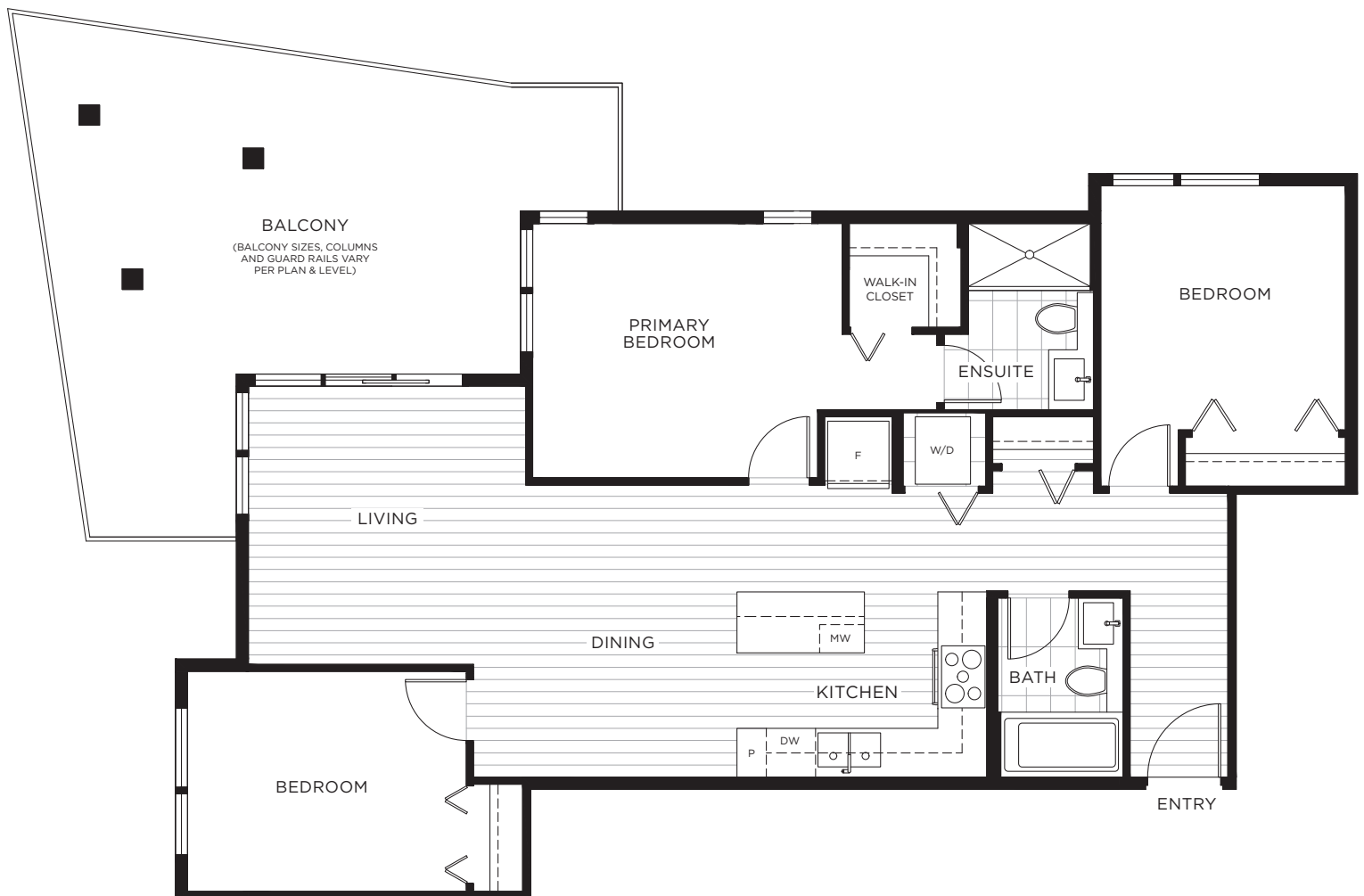
# A Z U R E 2

AT SOUTHGATE CITY

**INDOOR LIVING:** APPROX. 1,034 SQ. FT.

**OUTDOOR LIVING:** APPROX. 312 SQ. FT.

**TOTAL:** APPROX. 1,346 SQ. FT.



LEVELS 2 - 4

In a continuing effort to meet the challenge of product improvements, we reserve the right to modify or change dimensions, sizes, specifications, plan orientation and materials without notice. All patio, terrace, balcony and yard sizes may vary. Windows, columns, privacy screens, demising walls and guardrail details may vary depending upon the plan and floor level. The quality homes at Azure 2 are built by LM Azure II Homes Limited Partnership. E. & O.E.